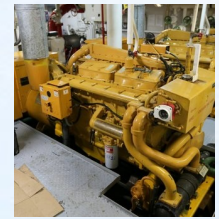
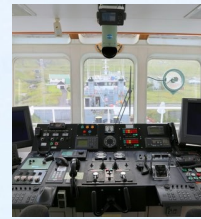


Thor Assister

Sun 24 Jun 2018 01:54:24 AM BST



Thor Assister, escort/support ship, built in Uexin Shipbuilding Company, China in 2005. Classed DNV-GL

SPECIFICATIONS

Name:

M/V Thor Assister

Call sign:

OZ 2061

Home port:

Hósvík, Faroe Islands

Flag:

Faroese

MMSI:

231013000

IMO no:

9358618

Class:

DNVGL + A1

Built:

2006

GT:

675

NT:

202

DW:

508.21 MT

Light ship weight:

768.4 MT

LOA:

45.00 m

LBP:

39.40 m

Breadth moulded:

11.80 m

Depth moulded:

Cargo on deck:

- Deck cargo: 180 t
- Deck area: 220 m²

Bollard pull:

50 ton

Accommodation:

- 28

Deck equipment:

- Deck crane: 1 x Toimil T45500, Outreach 14,1 m, SWL 2,45 T
- Anchor winches/windlass: 1 x electro-hydraulic Mentrade MM1020-HAW-GA-001
- Towing hook: Mampaey Quick Release 75 SWL
- Davits: Vest Davit 10T
- Gypsies: Suits for 28 mm (Ø) chains. Rated pull 5 mt @ 12 m/min
- Bow anchors: 2 x 1020 kgs stockless anchors
- Chains: 357.5m total length, 28 mm dia.
- Stern Roller 3.5m (L) x 1.5 m (Ø); SWL 80 mt

MOB boat:

- 1 x 6 men Neuvisa RR-40 inflatable c/w outboard motor

Sewage Treatment plant:

1 x 20 men/day; WCB-20

Safety Equipment:

- Liferafts: 4 x 25 men Viking inflatable type
- Lifejackets: 56 x Viking lifejackets
- Immersion suits: 56 x Viking immersions suits
- Other: search lights 2 x 1500 W halogen, floodlights 5 x 1000 W halogen

Firefighting equipment:

1 x 1200 m³/hr @ 13 bar Unitor SEP250x350 driven by front PTO of port

4.60 m

Draft:

3.80 m

Main engine:

2 x 1495 kw (2 x 2000 bhp) @ 1600 rpm Caterpillar 3516B

AUX. engine:

3 x Caterpillar 3406C : 349BHP

Generators:

3 x 245 kw @ 1500 rpm Caterpillar 3406C 415 V/3 Ph/50 Hz

Speed:

- Max speed: 11m3/ 24h @ 12 knots
- Economy speed: 4m3/ 24h @ 10 knots
- Chase speed: 2m3/ 24h @ 4.3 knots

Propellers:

Twin screw FPP in Kort Nozzles

Rudder:

2 x high performance streamline type

Steering gear:

2 x Kobelt; 3 TM; 2 x 35 deg rudder angle

Thruster:

1 x 350/kw electric driven Schottel STT170LK tunnel type (FPP); 5T thrust

Water generator:

ABC Elettromeccanica

Bunkers:

- Fuel: 480 m3

M/E. 2 x 600 m3/hr. Unitor FJM-150/K-EL. 1 x 35 m3/hr @ 30 m head. Azcue. CO2 system in the engine room.

Radio and navigation equipment:

GMDSS equipment:

A3 Furuno FS-1570 150W MF/HF SSB Transceiver.

2 x Furuno FM-8500S VHF-DSC Transceiver.

2 x Sailor 6215 VHF-DSC Transceiver.

Furuno NX-500 Navtex Receiver.

2 x Furuno Felcom-15 Inmarsat-C.

2 x Furuno PP-510 Printers.

SSAS IC-307 for Furuno Felcom-15.

McMurdo E-5 EPIRB.

McMurdo E-5 EPIRB hydrostatic release.

2 x McMurdo S4 SART.

3 x Icom IC-GM 1600 portable GMDSS VHF's

Radars:

2 x Furuno FAR-2117 ARPA

Echo sounder:

Furuno FE-700.

Navigation:

Furuno FA-170 AIS transceiver.

Furuno GPS GP-90. MaxSea.

Furuno DS-80 speed log

MaxSea Chart plotter

Gyro and Auto Pilot:

Simrad Gyro-compass GC-80 master compass.

Furuno SC-502 Satellite Compass.

2 x Simrad AP50 Autopilot.

Saura MR-165 C Magnetic Compass

Bridge Alarm:

UniSafe Bridge watch alarm

Other:

Vessel also fitted with Vingtor PA Talkback system and Self-Powered telephones

Pumps:

- Fuel oil: 1 x 50 m3/hr @ 50 m head; Azcue
- Fresh water: 2 x 50 m3/hr @ 50 m head; Azcue
- Seawater ballast pump: 3 x 50 m3/hr @ 35 m head; Azcue

Oily water separator:

1 x 0.5 m3/hr c/w 15 ppm alarm; CYF -0.5

Communication:

- E-mail: thorassister@thor.fo
- E-mail: thorassister.engine@thor.fo
- Tel.: Vsat +44 1224672343
- Tel.: FBB +87 0773157019
- Tel.: Iridium +88 1621415299
- InmarsatC: 423101310/11