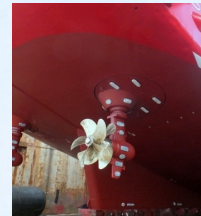
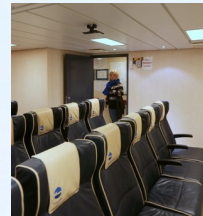


Thor Alpha

Sat 04 Apr 2020 03:03:01 PM BST



Thor Alpha, purpose built support/escort ship, built in 2007 in Mest shipyard, Faroe Islands. Classed DNV-GL

SPECIFICATIONS

Name:

M/V Thor Alpha

Call sign:

OZ 2070

Home port:

Hósvík, Faroe Islands

Flag:

Faroese

MMSI:

231 074 000

IMO no:

9458559

Class:

DNVGL + 1A1 E0 SF

Built:

2008

GT:

1051

NT:

315

DW:

1600 ton

Light ship weight:

700 ton

LOA:

55.10 m

LBP:

50.56 m

Breadth moulded:

12.50 m

Depth boat deck:

Cargo on deck:

- Deck cargo: 100 ton
- Deck area: 320 m²

Holds:

Cargo hold on deck 24 m² cooling room and 16 m² freezing room

Bollard pull:

19 ton

Accommodation:

- 16
- 34 reclining seats

Deck equipment:

- Deck crane: ABAS 5 ton SWL 1.8-16 m
- Rope winch: 1,5 ton
- Capstan: 4 x 5 ton
- 2 Anchor winches
- Towing hook: 30 ton SWL
- Davits: 1 x Vestdavit PLR - 10002 for workboat - SWL 11,000 kg; 1 x Vestdavit PL - 1500 for Rescueboat - SWL 1,500 kg

MOB boat:

Norsafe MIDGET 530 MK II Diesel Jet Rescue Boat, capacity 6 persons, 72 Hp inboard diesel engine waterjet

Sewage Treatment plant:

DVZ-SKA 40 "Biomaster"

Safety Equipment:

- Liferafts: 6 x Viking 25 DK SOLAS- 25 pax
- Lifejackets: 104 x Merman 16 A SOLAS
- Immersion suits: 54 x Viking PS 5002 SOLAS

FRC safety equipment:

8.00 m

Depth main deck:

5.50 m

Draft:

4.85 m

Main engine:

Diesel - electric

AUX. engine:

Scania type DI16 075M 4 x 596kW

Generators:

Norhavn GASl 16-07 SES 4 x 440 kW/1800 o/min. Make: Marelli

Speed:

- Max: 8 m3/ 24 @ 11.5 knots
- Economy: 4 m3/ 24 @ 8.5 - 9.0 knots (3 engines)
- Chase: 1.8 m3/ 24 @ 4.5 - 5.0 knots (2 engines)

Propellers:

2 X Rolls Royce Azimuth Thrusters Aquamasters US 105 CRP 2 x 650 KW

Steering gear:

2 x Azimuts steering speed 15Sec/ 360°

Thruster:

Water Jet Pump / Schottel SPJ 82 SD 1x360 KW

Water generator:

ENWA MT 4500 SRH 3m3/ 24 hrs

Bunkers:

- Heavy fuel 992 m3, Diesel oil 556 m3
- Lubes: Lub. 5200 Ltrs Hydr. 5200 ltrs
- Fresh water: 69 m3

- 3 x PS 4170 SOLASFRS working suits
- 4 x Crewsaver Crewfit Tween 2010 inflatable lifejackets
- 3 x Jofa 390 R Helmets

Firefighting equipment:

Clean Agent FS49c2

Radio and navigation equipment:

GMDSS equipment:

A3 Furuno FS-2570C 150W MF/HF SSB Transceiver.

Furuno FM-8800S VHF-DSC Transceiver. Radio Ocean RO 4700 VHF Transceiver.

Furuno NX-700-B Navtex Receiver.

Furuno Felcom-15 Inmarsat-C.

SSAS UPG for Furuno Felcom-15.

McMurdo E-5-A EPIRB. McMurdo E-5-M EPIRB.

McMurdo S4 SART.

Portable VHF: 2 x McMurdo R2 GMDSS + 1 x ENTEL

Radars:

FAR-2137S/IMO S-band 30 kW with 12 ft antenna.

FAR-2117/IMO X-band 12 kW with 6.5 ft antenna.

Echo sounder:

Furuno FE-700/200 IMO.

Furuno DS-80 speed-log

Navigation:

Furuno FA-150 AIS Transceiver.

Furuno GP-150 GPS-Professional navigator.

Furuno GP-170 GPS-Professional navigator.

MaxSea Commander software.

MaxSea tracking-modul for ARPA and AIS-traget.

Computer for Max-Sea

Gyro and Auto Pilot:

Anschuetz standard 22 Gyro-compass.

2 x Anschuetz Digital Autopilot Pilotstar D.

Furuno SC-110 Satellite compass. RD-30 Remote display.

Bridge Alarm:

Uni-Safe Bridge alarm

Other:

Emergency communication system wheelhouse/engine.

Communication system round the ship.

Telular SX5D GSM-phone with telefax.

Icom portable UHF-transceiver.

Safety helmet, with Peltor head-set.

Pumps:

- Fuel Oil: 2 x 120 m3/hour
- Fresh Water: 1 x 50 m3/hour

Oily water separator:

RWO Marine Water technology

Communication:

- Email: thoralpha@thor.fo
- Tel. IP Bridge: + 44 20 78 58 56 99
- Tel. IP Engine: + 44 20 78 58 56 98
- FBB: +870 77 31 54 563
- InmarsatC: 423107410/11