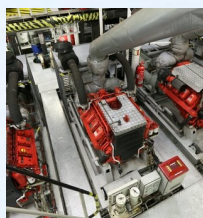
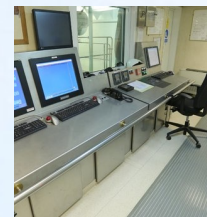
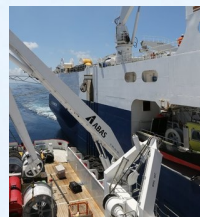


Thor Omega

Wed 27 May 2020 07:48:57 AM BST



Thor Omega, purpose built support/escort ship, built in 2008 in Mest shipyard, Faroe Islands. Classed DNV-GL

SPECIFICATIONS

Name:

M/V Thor Omega

Call sign:

OZ 2065

Home port:

Hósvík, Faroe Islands

Flag:

Faroese

MMSI:

231 085 000

IMO no:

9487823

Class:

DNVGL + 1A1 SF E0

Built:

2008

GT:

1153

NT:

367

DW:

1403 ton

Light ship weight:

856 ton

LOA:

55.10 m

LBP:

50.56 m

Breadth moulded:

12.50 m

Depth boat deck:

Cargo on deck:

- Deck cargo: 70 ton
- Deck area: 320 m²

Holds:

Cargo hold on deck 24 m² cooling room and 16 m² freezing room

Bollard pull:

24 ton

Accommodation:

- 50 Total
- 10 Crew Members
- 40 SPS Crew

Deck equipment:

- Deck crane: ABAS 5 ton SWL 1,8 - 16 m
- Rope winch: 1,5 ton
- Capstan: 4 x 5 ton
- 2 Anchor winches
- Towing hook: 30 ton SWL
- Bunker winch

Davits:

1 x Vestdavit PLR-15000 - SWL 15,000 kg

1 x Vestdavit PL - 3.000 for Rescue boat - SWL 3,000 kg

MOB boat:

Norsafe MIDGET 530 MK II Diesel Jet Rescue Boat, capacity:6 persons,72 Hp inboard diesel engine waterjet

Sewage Treatment plant:

DVZ-SKA 40 "Biomaster"

Additional Rescue Equipment:

Dacon Rescue Scoop model RSA700,7 x 10m

Safety Equipment:

8.00 m

Depth main deck:

5.50 m

Draft:

4.85 m

Main engine:

Diesel - electric

AUX. engine:

Scania type DI16 075M 4 x 596kW

Generators:

Norhavn GASl 16-07 SES 4 x 440 kW/1800 o/min. Make: Marelli

Speed:

- Max: 8 m3/ 24 @ 11.5 knots
- Economy: 4 m3/ 24 @ 8.5 - 9.0 knots (3 engines)
- Chase: 1.8 m3/ 24 @ 4.5 - 5.0 knots (2 engines)

Propellers:

2 X Rolls Royce Azimut Thrusters Aquamasters US 105 CRP 2 x 650 KW

Steering gear:

2 x Azimuts steering speed 15Sec/ 360°

Thruster:

Water Jet Pump / Schottel SPJ 82 SD 1x360 KW

Water generator:

ENWA MT 4500 SRH 3m3/ 24 hrs

Bunkers:

- Heavy fuel 992 m3, Diesel oil 556 m3
- Lubes: Lub. 5200 Ltrs Hydr. 5200 ltrs
- Fresh water: 69 m3

- Liferrafts: 6 x Viking 25 DK SOLAS 25 persons
- Life-jackets: 104 x Merman 16 A SOLAS
- Immersion suits: 65 x Viking PS 5002 SOLAS

FRC safety equipment:

- 2 x PS 4190 SOLAS FRC working suits
- 1 x PS 5041 SOLAS FRC working suits
- 3 x Crewsaver SOLAS inflatable lifejackets
- 3 x Jofa 390 R Helmets

Firefighting equipment:

Clean Agent FS49c2

Radio and navigation equipment:

GMDSS-equipment:

A4 Furuno FS-1570 150W MF/HF SSB Transceiver

Furuno FS-2575C

Furuno FM-8800S VHF-DSC Transceiver

Radio Ocean RO 4700 VHF Transceiver

Furuno NX-700-B Navtex Receiver

Furuno Felcom-15 Inmarsat-C

SSAS UPG for Furuno Felcom-15

Terminal Unit: Furuno 1B-58S

McMurdo E-5-A EPIRB

McMurdo E-5-M EPIRB

McMurdo G4 SART

McMurdo R-2 portable GMDSS VHF Transceiver

Furuno radar:

FAR-2137S/IMO S-band 30 kW with 12 fot antenna

FAR-2117/IMO X-band 12 kW with 6.5 fot antenna

Echosounder and speed-log:

Furuno FE-700/200 IMO

Furuno DS-80 speed-log

Navigation:

Furuno FA-150 AIS Transceiver

Furuno GP-150 GPS-Professional navigator

2 x Tecdis/T-2138 - BB/AC OSV

Gyro / autopilot and bridge-alarm:

Anschuetz Standard 22 Gyro-compass

Anschuetz Digital Autopilot Pilotstar D

Furuno SC-110 Satellite-compass

RD-30 Remote display

Other:

Emergency communication system wheelhouse/engine.

Communication system round the ship.

Telular SX5D GSM-phone with telefax.

Icom portable UHF-transceiver.

Safety helmet, with Peltor head-set.

ADCP (Acoustic Doppler Current Profiler)

Pumps:

- Fuel Oil: 2 x Allweiler, type 211.105.048 IBB IEC 200. 120 m3/hour
- Fresh Water: 1 x 50 m3/hour

Oily water separator:

RWO Marine Water technology

Communication:

- E-mail: thoromega@thor.fo
- E-Mail: Engine thoromegaengine@thor.fo
- Tel.: IP Bridge +44 122 467 2525
- Tel.: IP Engine +44 122 467 2523
- FBB : +870 773 237 019

